

Company Fact Sheet

Service Corporation International* (SCI: NYSE) is proud to be North America's leading provider of funeral, cremation and cemetery services. Since 1962, SCI has been serving families during their most difficult, personal and challenging times. Today, we are the company nearly 700,000 families turn to each year for compassionate and professional care.

8 Canadian Provinces

44 U.S. States*

1900+ Locations

* SCI also has locations in the District of Columbia and Puerto Rico.

Our vision.

Celebrating life with dedication, excellence and innovation.

Our brands.

Our portfolio of trusted brands offers families a full range of funeral, cremation, cemetery and celebration-of-life options. From simple arrangements to highly personalized events, our network meets the diverse needs of the communities we serve.

Dignity Memorial® is our flagship brand and the largest in our network, known for compassionate, professional care in planning life celebrations.

Neptune Society® is the nation's largest provider of affordable cremation services, with over 60 locations across the U.S.

Dignité^{MD} funeral homes in Quebec serve French-Canadian families with thoughtful, culturally aligned services.

Funeraria del Angel® supports the growing Hispanic population with care that honors language, culture and tradition.

Our commitment.

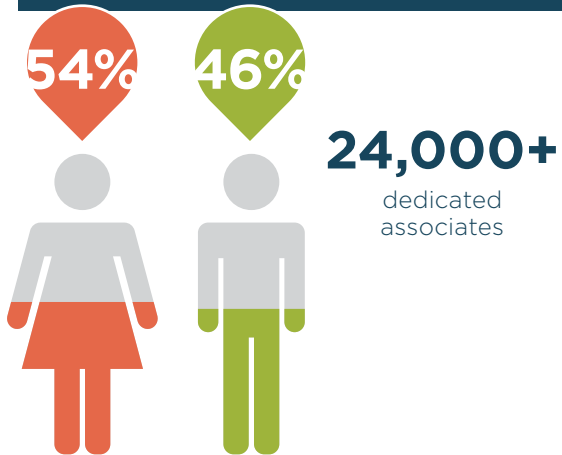
We are committed to the communities where we live and work. In 2025, we contributed over \$5.8 million to nonprofits across the U.S. and Canada.



Contact us.

SCI Corporate Communications
713-525-5235 | Press.Room@sci-us.com

Our associates.



Our purpose.

We are a company committed to supporting families during tough times and dedicated to celebrating the life and legacy of every loved one with professionalism, compassion and attention to detail.

Our values.

Our core values of Respect, Integrity, Service Excellence and Enduring Relationships are synonymous with our brands.